

A photograph of a modern outdoor kitchen at dusk. The kitchen features a wooden countertop, a stainless steel sink with a curved faucet, and a backsplash of small, square mosaic tiles. Above the counter are stainless steel cabinets and open shelving with various kitchen items. The kitchen is enclosed by a folding door system with multiple glass panels, which are currently open, revealing the interior. The exterior wall is dark blue horizontal siding, and the patio floor is made of large, light-colored tiles. A string of white fabric awnings hangs from the ceiling. In the foreground, there are several potted plants on a table.

Folding Door Systems

Design Better

Series 9500 Bi-Fold Door



The ability of Western Window Systems' Series 9500 Bi-Fold Door to completely open up to the outdoors is what makes it so unique. Designed to smoothly stack and fold against side walls, it creates a huge opening from corner to corner, connecting the indoors with the outside and expanding living space. Need everyday access? Opt for a convenient single door.

Clean Design

The Series 9500's contemporary look includes a 2.25" x 3.5" stile for additional glass and light, and a frame and sill depth of 4.5", allowing it to integrate into nearly any wall condition.

Concealed Locking System

The Series 9500 includes a hidden stainless steel multi-point lock to secure its large sliding panels, providing additional strength and protection. A keyed cylinder option is available.

Thermally Broken Aluminum

Thermally broken aluminum provides an insulating barrier that increases energy performance.

Climate Ready Glass

Our dual-paned low-E glass can be customized in a number of types and colors for improved privacy, protection, and thermal efficiency.

Smooth Operation

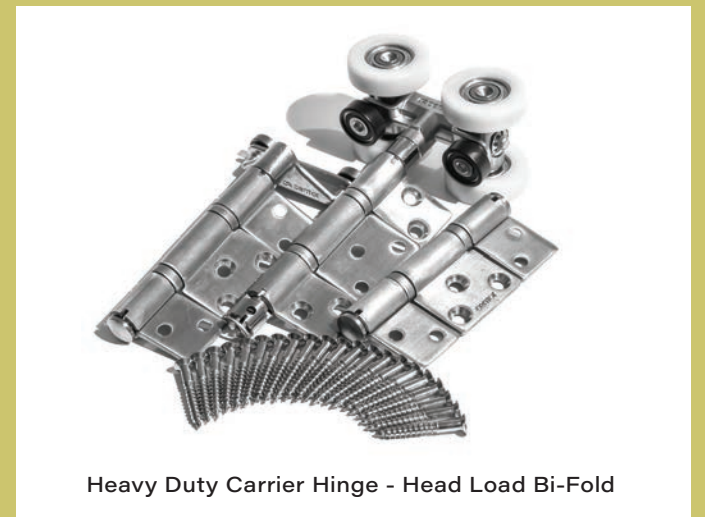
Sealed stainless steel ball bearing rollers make our bi-fold door easy to operate.

Configurations and Sizes

The Series 9500 Bi-Fold Door System is available in a multitude of configurations, with panels up to 42' wide and 12' tall (not to exceed 264 pounds per panel). Sixteen-panel maximum, eight in each direction. For additional flexibility, the Series 9500 can be specified to swing inward or outward.



Carrier Hinge - Bottom Load Bi-Fold



Heavy Duty Carrier Hinge - Head Load Bi-Fold

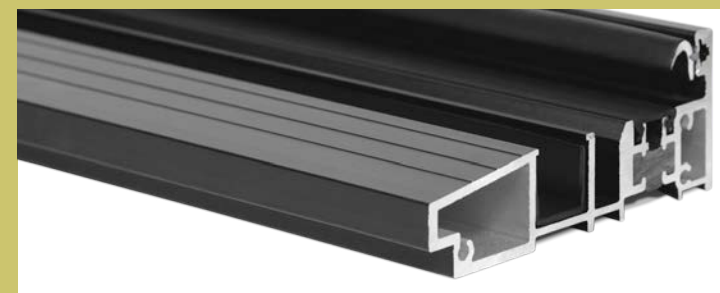
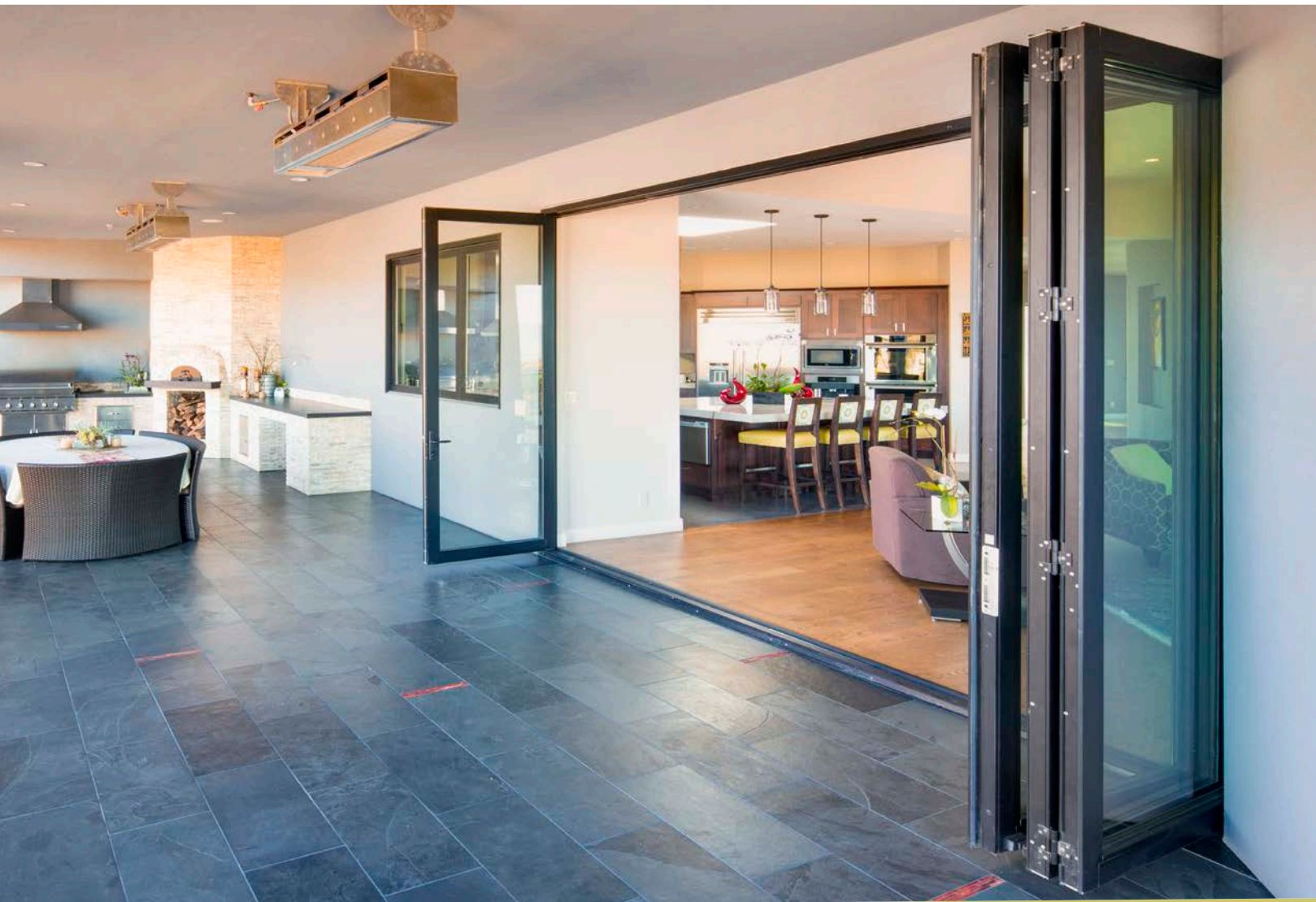


Carrier Hinge - Head Load Bi-Fold

Heavy Duty Hardware

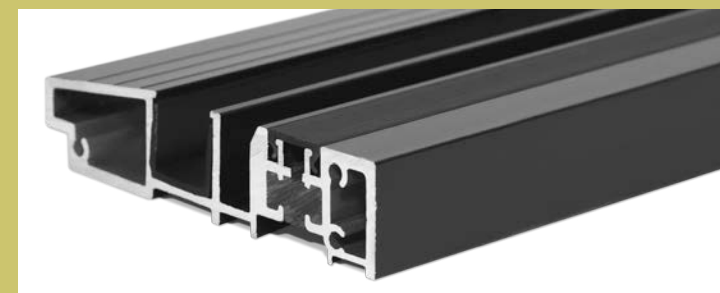
Our stainless steel head load carriers and hinges are capable of handling panels weighing up to 264 pounds. Bottom load carriers and hinges can accommodate door panels weighing up to 176 pounds.

Options: Series 9500 Bi-Fold Door



Top-Hung Water Barrier Sill

The water barrier sill safeguards against water intrusion while providing a tight seal. In top hung bi-fold doors, where the weight is concentrated in the heads, the interior leg is 1.82". Thresholds are finished to match the frame color.



Top-Hung Flush Sill

When ease of entry is more important than climate performance, the flush sill can line up with most interior flooring for a smooth transition to the outdoors. Top-hung bi-fold doors feature an interior threshold height of 1.07". Thresholds are finished to match the color of the frame.

Note: The flush sill may be less effective at preventing water penetration than the water barrier sill and therefore may not be appropriate in all climates, conditions, and exposures.



D-Pull Handle - Inactive Lock Handle



Premium Handle

High-Quality Handles

Designed for durability and comfort, each of our bi-fold doors features three high-quality, contemporary-looking handles. The premium handle, located on all active panels, includes an optional key lock. A D-shaped pull handle at the bi-fold's pivot points further aids in opening and closing the door. And an inactive lock handle at the door's pivot points secures the door panels with steel pins at the head and sill.

Premium and inactive lock handles are available in brushed nickel or black. The D-shaped pull handle is available in stainless steel or black.

Finishes

Aluminum finishes are available in-stock, as designer selections, and can be customized to match nearly any color. For approximate finish options, see page 122. For exact paint swatch samples, contact us.



Bottom-Load Water Barrier Sill

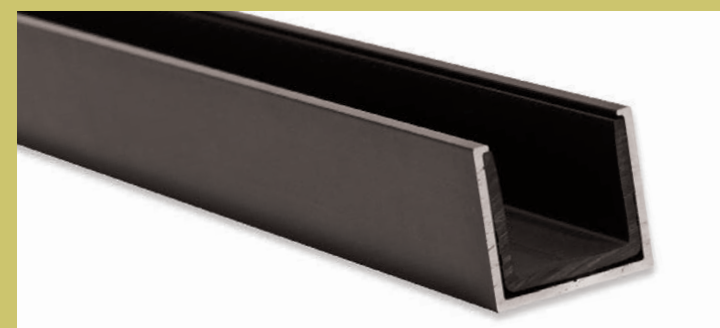
The water barrier sill safeguards against water intrusion while providing a tight seal. For bottom-loading bi-fold doors, where the bottom of the door carries the majority of the weight, the interior leg is 2.51". Thresholds are finished to match the color of the frame.



Bottom-Load Flush Sill

When ease of entry is more important than climate performance, the flush sill can line up with most interior flooring for a smooth transition to the outdoors. On bottom-loading bi-folds, the interior threshold height is 1.76". Thresholds are finished to match the color of the frame.

Note: The flush sill may be less effective at preventing water penetration than the water barrier sill and therefore may not be appropriate in all climates, conditions, and exposures.



U Track

For top-hung bi-fold doors intended for interior use only, the U track allows for a flush transition from room to room and is offered in a dark bronze finish.

Note: The U track is less effective at preventing water penetration than other sill options and therefore is not intended for exterior use.